

LEASEHOLD



Apartment

16 ST CATHERINES  
COURT, IRVINE ROAD,  
LITTLEHAMPTON,  
BN17 5HP

£125,000

#### FEATURES

- Ground Floor Retirement Flat
- Two Double Bedrooms
- Patio Doors From Lounge
- Lounge/Dining Room
- Modern Shower Room
- Communal Gardens
- Communal Lounge/Laundry Room
- Double Glazing



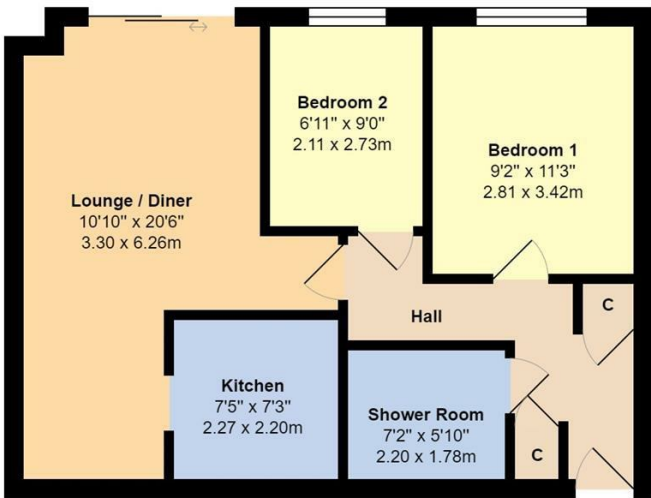


# 2 Bedroom Apartment located in Littlehampton

NO ONGOING CHAIN | Ground Floor Retirement Apartment | Two Double Bedrooms | Lounge/Diner | Fitted Kitchen | Modern Shower Room | Patio Doors out to Communal Gardens | Double Glazing | Electric Heating | Residents Lounge | Perpetual Lease Than Can Be Extended Free Of Charge | Non Allocated Residents Parking | EER: C

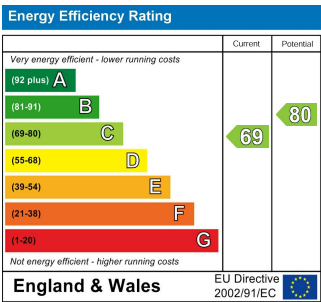
Call us on  
**01903 739000**  
**littlehampton@glyn-jones.com**  
**www.glyn-jones.com**

Council Tax Band  
**C**



Total Area: 566 ft² ... 52.6 m²

Whilst every attempt has been made to ensure the accuracy of the floor plan contained here, measurements are approximate and no responsibility is taken for error, omission or mis-statement.  
This plan is for illustrative purposes only and should be used as such by any prospective purchaser.  
Created by Jtm 2022



Agents Note: Whilst every care has been taken to prepare these particulars, they are for guidance purposes only. All measurements are approximate and are for general guidance purposes only and whilst every care has been taken to ensure their accuracy, they should not be relied upon and potential buyers are advised to recheck the measurements.

